

HP Ultrium tape drives

UNIX configuration guide

Generation 1 and 2 half-height drives

Edition 1, April 2005



Legal and notice information

© Copyright 2005 Hewlett-Packard Development Company, L.P.

Hewlett-Packard Company makes no warranty of any kind with regard to this material, including, but not limited to, the implied warranties of merchantability and fitness for a particular purpose. Hewlett-Packard shall not be liable for errors contained herein or for incidental or consequential damages in connection with the furnishing, performance, or use of this material.

This document contains proprietary information, which is protected by copyright. No part of this document may be photocopied, reproduced, or translated into another language without the prior written consent of Hewlett-Packard. The information is provided "as is" without warranty of any kind and is subject to change without notice. The only warranties for HP products and services are set forth in the express warranty statements accompanying such products and services. Nothing herein should be construed as constituting an additional warranty. HP shall not be liable for technical or editorial errors or omissions contained herein.

Revision history

Version	Date	Changes
Edition 1	April 2005	Generation 1 and 2 half-height SCSI version

HP Ultrium drives UNIX configuration guide

Contents

1	Introduction	7
	Purpose of this manual	7
	Ultrium drives in a library	7
	Backup applications	7
2	HP-UX systems	9
	HP servers and workstations—HP-UX 11.x	9
	Introduction	9
	Determining the SCSI ID	9
	Creating the device files	10
	What next?	13
3	HP alpha UNIX	15
	HP alpha UNIX 5.x	15
	What next?	16
4	IBM (AIX)	17
	Determining the SCSI ID	17
	Configuring the device files	17
	If you are using a graphics terminal running X-Windows	17
	If you are using a non-graphics terminal	19
	Device filenames under AIX	21
5	Linux	23
	Determining the SCSI ID (Linux)	23
	Configuring on Linux systems	23
	Using the seek and tell features of mt	24
	What next?	25
6	Sun Systems, Solaris 8, 9, 10	27
	Determining the SCSI ID	27
	Configuring the Device Files	27
	HP-Data Values	29
7	Verifying the Installation	31
	Verifying the Installation of the Drive (UNIX)	31
	To verify the installation:	31
	Example	32
	Glossary	33
	Index	35

Related documents

- The features and benefits of HP Ultrium drives are discussed in the HP Ultrium Technology White Paper. Please contact your HP supplier for copies.
- For a general background to LTO technology and licensing, go to <http://www.lto-technology.com>.
- See http://www.t10.org/t10_main.htm for INCITS SCSI Primary Commands—3 (SPC-3) and other specifications

Copies of documents of other standards bodies can be obtained from:

INCITS 11 West 42nd Street
New York,
NY 10036-8002
USA

ISO CP 56
CH-1211 Geneva 20
Switzerland

ECMA 114 Rue du Rhône
CH-1204 Geneva
Switzerland

Tel: +41 22 849 6000

Web URL: <http://www.ecma.ch>

Global Engineering Documents 2805 McGaw
Irvine, CA 92714
USA

Tel: 800 854 7179 or 714 261 1455

1 Introduction

Purpose of this manual

This manual provides basic information on configuring the drives with various operating systems. See the top-level release notes that accompany the drive for expected functionality and features.

Ultrium drives are supported on the following platforms:

- HP UNIX systems (HP-UX) ([Chapter 2](#))
- HP Alpha UNIX ([Chapter 3](#))
- IBM (AIX) ([Chapter 4](#))
- Linux ([Chapter 5](#))
- Sun Systems, Solaris 8, 9, 10 ([Chapter 6](#))

For platforms not mentioned here, contact HP because there may be new connectivity details available that arrived after the release notes were published.

See [Chapter 7](#) for details of how to verify the installation.

Ultrium drives in a library

Although Ultrium drives may also be used in a library, instructions about installing device drivers for automatic robotics are not included in this manual.

Backup applications

For optimum performance it is important to use a backup application that supports the drive's features within your system's configuration. See the *Getting Started Guide* for more information about usage models.

The following applications are suitable for use within an Enterprise environment and have been tested with Ultrium drives. They use the operating system's standard, built-in device drivers, as described in this manual. For further information about optimizing performance and making full use of the drive's functions, contact the software manufacturer or HP.

	HP-UX	AIX	Sun, Solaris	Linux
HP OpenView Storage Data Protector ¹	yes	yes	yes	yes
EMC Legato NetWorker	yes	yes	yes	yes
Veritas NetBackup	yes	yes	yes	yes ²

1. Cell Manager is only available on HP-UX or Windows

2. Redhat Server only (not Caldera, SUSE, and so on)

2 HP-UX systems

HP servers and workstations—HP-UX 11.x

Introduction

Before you install your tape drive log on to the HP web site, www.hp.com, and download the latest hardware enablement patch bundle for your operating system. This ensures that you will have the correct device driver for your tape drive.

Determining the SCSI ID

Before you configure your system to support an HP Ultrium drive, determine what SCSI ID to use. The ID must be unique for each device attached to the SCSI bus. To list existing devices, use the following command:

```
% /sbin/ioscan -f
```

The output should look similar to the following:

Class	I	H/W	Path	Driver	S/W	State	H/W	Type	Description
bc	0			root	CLAIMED			BUS_NEXUS	
bc	1	8		bc	CLAIMED			BUS_NEXUS	Pseudo Bus Converter
ba	0	8/0		GSctoPCI	CLAIMED			BUS_NEXUS	GSctoPCI Bridge
ext_bus	1	8/0/2/0		c720	CLAIMED			INTERFACE	SCSI C895 Ultra2 Wide LVD
target	0	8/0/2/0.7		tgt	CLAIMED			DEVICE	
ctl	1	8/0/2/0.7.0		sctl	CLAIMED			DEVICE	Initiator
lan	0	8/0/20/0		btlan3	CLAIMED			INTERFACE	PCI(10110019) -- Built-in #1
ba	1	8/16		bus_adapter	CLAIMED			BUS_NEXUS	Core I/O Adapter
tty	0	8/16/4		asio0	CLAIMED			INTERFACE	Built-in RS-232C
ext_bus	2	8/16/5		c720	CLAIMED			INTERFACE	Built-in SCSI
target	1	8/16/5.5		tgt	CLAIMED			DEVICE	
disk	0	8/16/5.5.0		sdisk	CLAIMED			DEVICE	SEAGATE ST34573N
target	2	8/16/5.7		tgt	CLAIMED			DEVICE	
ctl	2	8/16/5.7.0		sctl	CLAIMED			DEVICE	Initiator
processor	0	62		processor	CLAIMED			PROCESSOR	Processor
memory	0	63		memory	CLAIMED			MEMORY	Memory

After you have installed the new tape drive, you can check it has been attached successfully. From a shell window (hpterm/xterm), execute `ioscan` to display the list of attached devices.

For an HP Ultrium drive, execute the following:

```
% /sbin/ioscan -f | grep "Ultrium"
```

The new lines should look similar to the following for a Generation 1 drive, where the 4 in the I field represents the instance of the SCSI tape driver, not the SCSI ID:

```
tape      4  2/0/1.5.0  stape      CLAIMED  DEVICE    HP        Ultrium 1-SCSI
```

or, for a Generation 2 drive:

```
tape      4  2/0/1.5.0  stape      CLAIMED  DEVICE    HP        Ultrium 2-SCSI
```

 **NOTE:** If you are installing the drive onto a Storage Area Network (SAN), the fibre channel/SCSI bridge will also appear in the list of attached devices.

If you cannot find the Ultrium drive, this may be because the kernel does not contain the correct driver. Use the System Administration Manager (`sam`) to add `stape` to the kernel:

To add `stape` to the kernel using `sam`:

1. `% sam`
2. Select the following:
Kernel Configuration
Drivers
3. Highlight the `stape` driver. If the driver has not been added to the kernel, both Current State and Pending State will read "Out".
4. Select the following:
Actions
Add Driver to Kernel
The Pending State will now read "In".
5. To add the new driver to the kernel, select:
Actions
Create a New Kernel
6. The `stape` driver will now be added to the kernel and then the system will reboot.

Creating the device files

Once you have verified the tape drive connection, you need to create the appropriate device files for the drive. Normally, you reboot the system after attaching the tape drive, and this process runs `insf`. However, if you have not rebooted since attaching the drive, you can create device files through the System Administration Manager (`sam`). You can also use the `mksf` command, but this is not recommended.

To add device files using `sam`:

This is the recommended and simplest way to create device files.

1. `% sam`
2. Select the following:
Peripheral Devices
Tape Drives
`sam` then scans the system for any tape drives connected.

When an HP Ultrium Generation 1 half-height drive is found, it will be displayed as:

Hardware Path	Driver	Description
8/0/2/0.3.0	stape	HP Ultrium 1-SCSI

For a Generation 2 drive, the second line will be:

```
8/0/2/0.3.0          stape          HP          Ultrium 2-SCSI
```

3. Highlight the Ultrium drive and select the following from the tool bar:

```
Actions
Create Device Files
Create Default Device Files
```

This creates default device files for the drive. To view the files that have been created, select:

```
Actions
Create Device Files
Show Device Files
```

where:

Device File	Description
<I>	Instance number of the drive:
<I>m	AT&T encoding, rewind driver
<I>mn	AT&T encoding, non-rewind driver
<I>mb	Berkeley encoding, rewind driver
<I>mnb	Berkeley encoding, non-rewind driver
<X>	Card number
<Y>	Target number
<Z>	LUN number:
cXtYbZBEST	Best compression driver, AT&T encoding, with rewind
cXtYbZBESTb	Best compression driver, Berkeley encoding, with rewind
cXtYbZBESTn	Best compression driver, AT&T encoding, non-rewind
cXtYbZBESTnb	Best compression driver, Berkeley encoding, non-rewind

4. Exit `sam` and run `ioscan` to see the tape drive:

```
%/sbin/ioscan -C tape -fn
```

To create device files using `mksf`:

 **NOTE:** This method is *not* recommended.

1. Run `insf`:

```
% /sbin/insf -C tape
```

2. Create device files for the devices using the `mksf` command:

```
% /sbin/mksf -d stape -I <instance> [-n] [-u] /dev/rmt/X<name>
```

where:

Argument	Description
-d stape	SCSI tape driver
-I <instance>	Tape drive's hardware address via the instance of the SCSI tape driver. The first instance is 0, the second 1, and so on.
[-n]	No rewind; absence of this parameter indicates rewind mode

Argument	Description												
<code>[-u]</code>	<p>Berkeley mode; absence of this parameter indicates AT&T mode. Berkeley and AT&T modes differ in their read-only close behavior:</p> <ul style="list-style-type: none"> In Berkeley mode, the tape position remains unchanged by a device close operation. In AT&T mode, a device close operation causes the tape to be repositioned just after the next tape filemark (the start of the next file). <p>In most cases, Berkeley mode should be used.</p>												
<code>/dev/rmt/X<name></code>	<p>Path of the device file, where:</p> <table border="1"> <tbody> <tr> <td><code>X</code></td> <td>Tape device identifier. Use the next available identifier. You can examine the contents of <code>/dev/rmt</code> using the <code>ls</code> command to determine which identifiers have already been used.</td> </tr> <tr> <td><code><name></code></td> <td>Short name (in HP-UX 9.x-style) of the device file:</td> </tr> <tr> <td><code>mnb</code></td> <td>No rewind, compression disabled, Berkeley-mode device</td> </tr> <tr> <td><code>hnb</code></td> <td>No rewind, compression disabled, Berkeley-mode device</td> </tr> <tr> <td><code>mnb</code></td> <td>No rewind, compression disabled, Berkeley-mode device</td> </tr> <tr> <td><code>hnb</code></td> <td>No rewind, compression enabled, Berkeley-mode device</td> </tr> </tbody> </table>	<code>X</code>	Tape device identifier. Use the next available identifier. You can examine the contents of <code>/dev/rmt</code> using the <code>ls</code> command to determine which identifiers have already been used.	<code><name></code>	Short name (in HP-UX 9.x-style) of the device file:	<code>mnb</code>	No rewind, compression disabled, Berkeley-mode device	<code>hnb</code>	No rewind, compression disabled, Berkeley-mode device	<code>mnb</code>	No rewind, compression disabled, Berkeley-mode device	<code>hnb</code>	No rewind, compression enabled, Berkeley-mode device
<code>X</code>	Tape device identifier. Use the next available identifier. You can examine the contents of <code>/dev/rmt</code> using the <code>ls</code> command to determine which identifiers have already been used.												
<code><name></code>	Short name (in HP-UX 9.x-style) of the device file:												
<code>mnb</code>	No rewind, compression disabled, Berkeley-mode device												
<code>hnb</code>	No rewind, compression disabled, Berkeley-mode device												
<code>mnb</code>	No rewind, compression disabled, Berkeley-mode device												
<code>hnb</code>	No rewind, compression enabled, Berkeley-mode device												

See the man page (`man 1m mksf`) for other options of the `mksf` command. The `stape` section covers the SCSI tape driver options. The man page `man 7 mt` describes long filenames used in HP-UX 10.x and later.

Example:

To create a device file with the following characteristics:

- A hardware address specified by instance 5 (`-I 5`)
- No rewind (`-n`)
- Berkeley mode tape positioning on close (`-u`)
- A filename of `4mnb`, where 4 is the tape device identifier (`/dev/rmt/4mnb`)

You would execute the following:

```
% /sbin/mksf -d stape -I 4 -n -u /dev/rmt/4mnb
```

Check that the appropriate device file was created using `lssf`:

```
% /sbin/lssf /dev/rmt/4mnb
```

This should produce the following output to show the device file now exists:

```
stape card instance 0 SCSI target 6 SCSI LUN 0 berkeley no rewind
BEST density at address 2/0/1.6.0 /dev/rmt/4mnb
```

To create a device file for Ultrium in uncompressed mode, use a command such as:

```
mksf -H -a -b U_18
```

and for compressed mode (default):

```
mksf -H -a -b U_18C
```

The hardware path can be found from previous `ioscan` output.

NOTE: For Generation 2 half-height drives only: System Administration Manager (SAM) reports the drive as Ultrium 460 instead of Ultrium 448:



This will be fixed in a later patch.

What next?

Once device files have been created, you should confirm that your new tape drive is working properly. [Chapter 7 on page 33](#) provides instructions on backing up and restoring a sample file to test your installation.

3 HP alpha UNIX

HP alpha UNIX 5.x

1. Add the following entry to your `/dev/DDR.dbase` file:

```
SCSIDEVICE
  Type = tape
  Name = "HP" "Ultrium"
#
PARAMETERS:
  TypeSubClass      = lto          # Linear Tape Open
  BlockSize         = 262144
  TagQueueDepth    = 0
  MaxTransferSize   = 0xffffffff # 16Mb - 1
  ReadyTimeSeconds = 120          # Seconds
  SyncTransfers    = enabled
  WideTransfers    = enabled
  InquiryLength    = 0x20
DENSITY:
  DensityNumber     = 0,1,2,3,4,5,6,7
  OneFileMarkOnClose = yes
  DensityCode       = 0x40 (Gen 1 drives) or 0x42 (Gen 2 drives)
  Blocking          = 0
  CompressionCode   = 1
  Buffered          = 1
  Speed             = 0
MODESELECT:
  ModeSelectNumber  = 0
  SavePage          = No
  PageFormat        = scsi2
  BlockDescriptor   = yes
  TransferLength    = 16
  Hdr.Tape.BufferMode = 0x1
  Hdr.MediumType    = 0
  Data.UBYTE[0]     = 0x3D # Vendor Unique Page Code 3D
  Data.UBYTE[1]     = 0x02
  Data.UBYTE[2]     = 0x01
  Data.UBYTE[3]     = 0x00
```

2. Rebuild the kernel by running `/sbin/DDR_config`, then reboot the system with the tape drive attached. Device files for the Ultrium drive will be generated in `/dev/tape` and `/dev/ntape` when you reboot.
3. The names of the device files can be interpreted as follows:

Devices in the `/dev/ntape` directory are "no-rewind" devices. Those in `/dev/tape` will perform rewind on close.

The device files then have the syntax: `tapeX_dn`

For example, `/dev/ntape/tape66_d1` is a device file for device 66, no-rewind using density number 1. Since all density numbers have the same parameters it does not matter which density number file is used.

What next?

Once device files have been created, you should confirm that your new tape drive is working properly. [Chapter 7 on page 33](#) provides instructions on backing up and restoring a sample file to test your installation.

4 IBM (AIX)

Determining the SCSI ID

Before you configure your system to support Ultrium drives, determine which SCSI ID to use. IDs must be unique for each device attached to the SCSI bus. To list existing devices, use the following:

```
% lsdev -C |grep SCSI
```

This produces output similar to:

```
scsi0 Available 00-00-0S Standard SCSI I/O Controller
hdisk0 Available 10-60-00-0,0 16 Bit LVD SCSI Disk Drive
rmt1 Defined 00-00-0S-2,0 Other SCSI Tape Drive
```

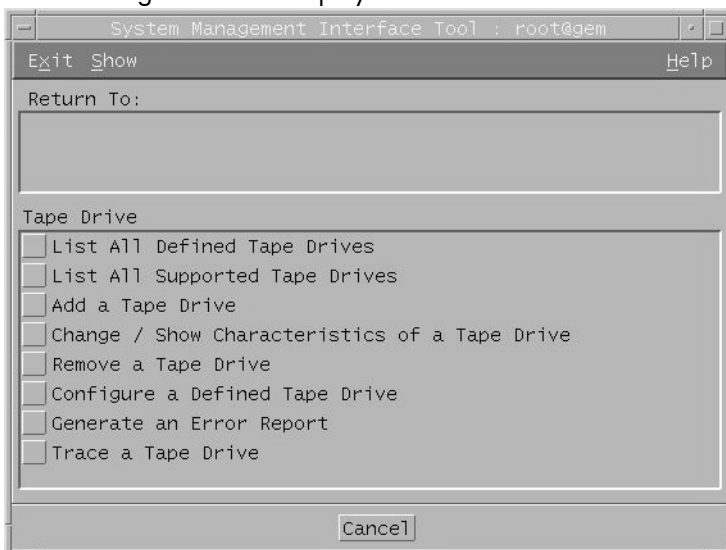
The SCSI ID is in the series 00-00-0S-X,0, where X is the SCSI ID. Review the list of existing SCSI IDs and choose an available ID to assign to the new tape drive.

Configuring the device files

To install an HP Ultrium drive on an IBM workstation, create the appropriate device files for the drive. To change to variable block mode, use the following procedure:

If you are using a graphics terminal running X-Windows

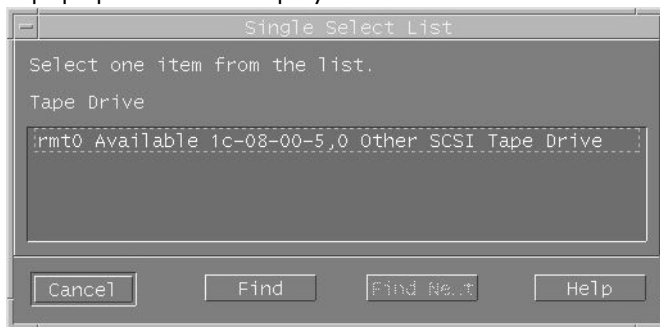
1. At a Windows terminal, type:
smit tape
2. The following window is displayed:



If no device has been configured at this address before, select “add a tape drive” to set up the address.

Otherwise, select “change/show characteristics of a tape drive”

3. A pop-up window is displayed:



Select "ost" or "Other SCSI tape drive" as the tape drive you wish to change.

If no device has been configured at this address before, choose connection addresses as appropriate.

4. The following details are displayed:

Tape Drive	rmt0	
Tape Drive type	ost	
Tape Drive interface	scsi	
Description	Other SCSI Tape Driv	
Status	Available	
Location	1c-08-00-5,0	
Parent adapter	scsi4	
Connection address	5,0	
BLOCK size (0=variable length)(Num.)	512	List
Use DEVICE BUFFERS during writes	yes	List ▲ ▼
RETURN error on tape change or reset	no	List ▲ ▼
Use EXTENDED file marks	yes	List ▲ ▼
RESERVE/RELEASE support	no	List ▲ ▼
BLOCK SIZE for variable length support(Num.)	0	List
DENSITY setting #1(Num.)	0	List
DENSITY setting #2(Num.)	0	List
Set delay after a FAILED command(Num.)	45	List
Set maximum delay for the READ/WRITE command(Num.)	144	List
Maximum LUN inquired on device	31	List

OK Command Reset Cancel ?

Check the following values and change them if necessary:

- BLOCK Size = 0
- Use EXTENDED file marks = "no"
- RESERVE/RELEASE support = "yes"
- Set maximum delay for the READ/WRITE command = 1200

Click on the "DO" button to apply the changes.

If you are using a non-graphics terminal

1. At the command line type:
% `smit -C tape`

2. The following is displayed:

```
Tape Drive

Move cursor to desired item and press Enter.

List All Defined Tape Drives
List All Supported Tape Drives
Add a Tape Drive
Change / Show Characteristics of a Tape Drive
Remove a Tape Drive
Configure a Defined Tape Drive
Generate an Error Report
Trace a Tape Drive
```

If no device has been configured at this address before, select “add a tape drive” to set up the address.

Otherwise, select “change/show characteristics of a tape drive”

3. A pop-up window is displayed:

```
Tape Drive

Move cursor to desired item and press Enter.

rmt0 Available 1c-08-00-5,0 Other SCSI Tape Drive

F1=Help          F2=Refresh      F3=Cancel
F8=Image        F10=Exit       Enter=Do
/=Find          n=Find Next
```

Select “ost” or “Other SCSI tape drive” as the tape drive you wish to change.

If no device has been configured at this address before, choose connection addresses as appropriate.

4. The following details are displayed:

```

Change/Show Characteristics of a Tape Drive

Type or select values in entry fields.
Press Enter AFTER making all desired changes.

[MORE...5]                                [Entry Fields]
Location                                   1c-08-00-5,0
Parent adapter                             scsi4
Connection address                         5,0
BLOCK size (0=variable length)            [512]          ++
Use DEVICE BUFFERS during writes          yes           +
RETURN error on tape change or reset      no            +
Use EXTENDED file marks                   yes           +
RESERVE/RELEASE support                   no            +
BLOCK SIZE for variable length support    [0]           ++
DENSITY setting #1                        [0]           ++
DENSITY setting #2                        [0]           ++
Set delay after a FAILED command          [45]          ++
Set maximum delay for the READ/WRITE command [144]        ++
Maximum LUN inquired on device            [81]          +
[BOTTOM]

F1=Help      F2=Refresh      F3=Cancel      F4=List
F5=Reset     F6=Command      F7=Edit       F8=Image
F9=Shell     F10=Exit        Enter=Do

```

Check the following values and change them if necessary:

- BLOCK Size = 0
- Use EXTENDED file marks = "no"
- RESERVE/RELEASE support = "yes"
- Set maximum delay for the READ/WRITE command = 1200

Click on the "DO" button to apply the changes.

HP Ultrium drives will work with `tar`, `cpio`, `backup`, `restore` and `dd`. For systems other than the 43P, the drive is also boot-capable, provided a boot tape is generated using `mkszfile` and `mksysb`.

Once device files have been created, you should confirm that your new tape drive is working properly. [Chapter 7 on page 33](#) provides instructions on backing up and restoring a sample file to test your installation.

Device filenames under AIX

Use device filenames as listed below for the combination of Rewind on Close, Retention on Open, and Compression that you want:

Filename	Rewind on Close	Retention on Open	Compression
/dev/rmt <i>n</i>	Yes	No	enabled
/dev/rmt <i>n</i> .1	No	No	enabled
/dev/rmt <i>n</i> .2	Yes	Yes	enabled
/dev/rmt <i>n</i> .3	No	Yes	enabled

Filename	Rewind on Close	Retension on Open	Compression
/dev/rmt <i>n</i> .4	Yes	No	disabled
/dev/rmt <i>n</i> .5	No	No	disabled
/dev/rmt <i>n</i> .6	Yes	Yes	disabled
/dev/rmt <i>n</i> .7	No	Yes	disabled

The *n* in the filename is the instance number assigned to the drive by the operating system, where 0 is the first device, 1 is the second and so on.

Rewind on Close Normally, the drive repositions the tape to BOT (Beginning of Tape) when the device file is closed. Using the no rewind option is useful when creating and reading tapes that contain multiple files.

Retension on Open Retensioning consists of winding to EOT (End of Tape) and then rewinding to BOT, in order to reduce errors. If this option is selected, the tape is positioned at BOT as part of the open process.

Compression Compression can be disabled or enabled.

5 Linux

Determining the SCSI ID (Linux)

Look at the output of `dmesg` to find out what SCSI channel number is used for each connection.

To find out the SCSI IDs in use on each channel, type:

```
cat /proc/scsi/scsi
```

This will produce output similar to the following for each device:

```
Attached Devices
Host: SCSI0 Channel: 00 Id:00 Lun:00
Vendor: HP Model -----
Type: Direct-Access ANSI SCSI Revision 02
```

Look at the ID information to establish which IDs are in use.

Configuring on Linux systems

No changes are needed to support Ultrium on Linux platforms, however you should ensure that you have the relevant drivers loaded.

To see the device drivers loaded currently, execute `lsmod`. This will give output similar to:


Module	Size	Used by
sgm	4376	1
ide-scsi	7200	0
lockd	30792	1
sunrpc	53316	1
st	24656	0
sym53c8xx	52096	1
aic7xxx	136184	2

The lines of interest here are:

<code>st</code>	The tape driver. Its presence shows that the tape driver is loaded.
<code>sym53c8xx</code>	The SCSI chipset driver for the LSI Logic family of HBAs (amongst others).
<code>aic7xxx</code>	The SCSI chipset driver for the Adaptec 7xxx chipset family (such as Adaptec 29160LP).

Latest SCSI controller drivers for Linux are available from the manufacturer's web site.

In order to communicate with a tape device, the operating system needs to have drivers for the tape and the underlying transport mechanism (the host bus adaptor) loaded. Ensure that both are available as either loadable modules (for example, usable with `insmod` and visible with `lsmod`) or are statically built into your kernel.

 **NOTE:** To add drivers to the statically built kernel you need the Linux source code available on disk and knowledge of how to use the kernel building tools that ship with various Linux distributions. This should not be attempted by novice users.

In order to determine if the drive has been detected by the tape driver at module load time, execute:

```
dmesg | grep "st"
```

This should find a number of lines. One should look like:

```
Detected SCSI tape st0 at scsil, channel 0, id 5, lun 0
```

To load the tape driver module if it is not loaded as above, execute:

```
insmod st
```

to load it. This should happen naturally if your system is rebooted after attaching the drive.

When the `ST` driver module has been added, a list of tape device files will be created automatically. They reside in the `/dev/` directory and have the syntax:

```
/dev/stp or dev/nstp
```

where:

`p` Instance number of the device file (if only one drive is connected to the system, this will be 0)

`n` Indicates this is a no-rewind driver.

To enable large transfers under Linux (>64 KB per write), edit the file `/usr/src/linux/drivers/scsi/st_options.h` and change the definition of `ST_BUFFER_BLOCKS`.

If you want requests to space to end of data (EOD) to be faster, you should also enable `ST_FAST_MTEOM` in the same file. After changing this file, rebuild the modules and install the new binary. At the very least, this requires:

```
make modules
make modules_install
```

from the `/usr/src/linux` directory. See your kernel documentation.

Using the seek and tell features of `mt`

To use the seek and tell features of `mt`, you must tell the `st` driver that HP Ultrium drives use logical block addressing:

```
mt -f <device file> stsetoptions scsi2logical
```

where `/dev/stp` is the device file.

Note however that this information is not preserved across reboots, so you need to execute this command each time the system comes up. The `stinit` utility offers a convenient way of handling this; see the relevant `man` page for more information. If you use this approach, set the manufacturer parameter to `HP` and the model to “Ultrium 1-SCSI” for Generation 1 drives, or “Ultrium 2-SCSI” for Generation 2 drives.

What next?

Once device files have been created, you should confirm that your new tape drive is working properly. [Chapter 7 on page 33](#) provides instructions on backing up and restoring a sample file to test your installation.

6 Sun Systems, Solaris 8, 9, 10

Determining the SCSI ID

Before you configure your system to support an HP Ultrium drive, determine which SCSI ID to use. IDs must be unique for each device on attached to the SCSI bus.

1. Use the `modinfo` command to identify SCSI controller drivers installed on the system:

```
% modinfo | grep "HBA Driver"
```

This produces output similar to the following:

```
106 780a0000 102b3 50 1 glm (GLM SCSI HBA Driver)
110 780b4000 1272c 228 1 qus (isp10160 HBA Driver)
```

For the adapter to which the new tape drive is attached, you need to determine what SCSI IDs are already used.

2. Determine the SCSI IDs of existing devices attached to the SCSI controller:

For all adapters:

```
% dmesg | egrep ".*xxx.*target" | sort | uniq
```

where `xxx` = the type of adapter (`esp`, `glm`, `fas`, `qus` or `isp`), as appropriate.

For example, for an ESP-based adapter:

```
% dmesg | egrep ".*esp.*target" | sort | uniq
```

This produces a list similar to:

```
sd0 at esp0: target 0 lun 0 sd6 at esp0: target 6 lun 0
```

This indicates that SCSI IDs 0 and 6 are used for existing devices. SCSI ID 7 is generally used for the adapter itself. Here, you would choose a SCSI ID from 1 to 5 for the new tape drive.

Configuring the Device Files

Determine the device file by typing:

```
% ls -l /dev/rmt/*m | grep "st@X"
```

where `X` is the SCSI ID. Identify the line for the tape drive. For example, if the drive was at SCSI ID 2, look for the line containing "`st@2,0`". This might be as follows (but on a single line):

```
lrwxrwxrwx 1 root root 63 Mar 1 00:00 /dev/rmt/0m
../../../../devices/sbus@1f,0/espdma@e,8400000/esp@e, 8800000/st@2,0:m
```

Here you could use `/dev/rmt/0m` (shown underlined above) as the device file.

For optimal performance, ensure that you have the following minimum patch number:

	Generation 1 drives	Generation 2 drives
Solaris 8	108725-07	108725-13
Solaris 9	original release	113277-11

If for some reason you cannot upgrade to the minimum patch level, you can make the following file modifications to enhance performance:

1. In the file `/kernel/drv/st.conf`, after these lines:

```
#####  
# Copyright (c) 1992, by Sun Microsystems, Inc.  
#ident  "@(#)st.conf  1.6      93/05/03 SMI"
```

add the following depending on which version of operating system you are installing (there are 6 significant spaces between HP and Ultrium in line 2):

for Solaris 8 without st patch:

for Generation 1 drives:

```
tape-config-list =  
  "HP      Ultrium 1", "HP Ultrium LTO 1", "HP_LTO_GEN_1";  
  HP_LTO_GEN_1 = 1,0x36,0,0xd639,4,0x00,0x00,0x00,0x40,3;  
  name="st" class="scsi"  
          target=X lun=0;
```

where x is the SCSI target address of the device you have attached,

or, for Generation 2 drives:

```
tape-config-list =  
  "HP      Ultrium 2", "HP Ultrium LTO 2", "HP_LTO_GEN_2";  
  HP_LTO_GEN_2 = 1,0x36,0,0xd639,4,0x00,0x00,0x00,0x42,3;  
  name="st" class="scsi"  
          target=X lun=0;
```

for Solaris 9 and 10 (and 8 with st patch):

for Generation 1 drives:

```
tape-config-list =  
  "HP      Ultrium 1", "HP Ultrium LTO 1", "HP_LTO_GEN_1";  
  HP_LTO_GEN_1 = 2,0x3B,0,0x18659,4,0x40,0x40,0x40,0x40,3,60,1200,  
  600,1200,600,600,18000;  
  name="st" class="scsi"  
          target=X lun=0;
```

where x is the SCSI target address of the device you have attached.

See ["HP-Data Values" on page 29](#) below for the values of the parameters in these lines.

or, for Generation 2 drives:

```
tape-config-list =  
  "HP      Ultrium 2", "HP Ultrium LTO 2", "HP_LTO_GEN_2";  
  HP_LTO_GEN_2 = 2,0x3B,0,0x18659,4,0x42,0x42,0x42,0x42,3,60,1200,  
  600,1200,600,600,18000;  
  name="st" class="scsi"  
          target=X lun=0;
```

2. If you are replacing an existing tape device on the same SCSI ID, remove the contents of the `/dev/rmt` directory as follows:

```
% cd /dev/rmt  
% rm *
```

3. Instead of rebooting the device, follow these steps.

a. Find the kernel module ID:

```
# modinfo | grep "st ("
96 60dcc000 cdb0 33 1 st (SCSI Sequential Access Driver)
```

In this example the ID is 96.

b. Unload the kernel module:

```
# modunload -i 96
```

c. Load the kernel module back in:

```
# modload -p drv/st
```

d. Rebuild the device paths:

```
devfsadm -C
devfsadm -i st
```

For further details, see "How do you load st.conf changes without rebooting," SunSolve document 18010, on

<http://sunsolve.sun.com/search/document.do?assetkey=1-9-18010-1&searchclause=18010>

4. You should now be able to use the drive.

- Use `/dev/rmt/Xcb` if you require a compression rewind device file, where *x* is the relevant device address.
- Use `/dev/rmt/Xcbn` when you require a compression non-rewind device.

Once the device files have been created, you should confirm that your new tape drive is working properly. [Chapter 7 on page 33](#) provides instructions on backing up and restoring a sample file to test your installation.

HP-Data Values

The values for `HP_LTO_GEN_n` and `name`, which provide normal LTO mode, have the following meanings:

The syntax for `HP_LTO_GEN_n` on Solaris 8/9/10 is:

```
<drive type> = <version>, <type>, <bsize>, <options>, <no. of densities>,
<density 0>, <density 1>, <density 2>, <density 3>, <default density>,
<non-motion timeout>, <read/write timeout>, <rewind timeout>,
<space timeout>, <load timeout>, <unload timeout>, <erase timeout>
```

where:

Parameter	Value	Meaning
<version>	1 or 2	Indicates the format of the following parameters.
<type>	0x36 or 0x3B	The value for an Ultrium drive in <code>/usr/include/sys/mtio.h</code> . For Solaris 8, 0x36 indicates a type of <code>MT_ISOTHER</code> . Later versions of Solaris support the value 0x3B which indicates a type of <code>MT_LTO</code> .
<bsize>	0	Indicates variable block size.

Parameter	Value	Meaning
<options>	0xd639 or 0x18659	<p>This value is derived from constants provided in <code>/usr/include/sys/scsi/targets/stddef.h</code>. The value determines which operations the driver can perform with the attached device by using a unique value for each feature and then adding them together to form the options value. Supported features will vary with OS revision, and may include the following:</p> <ul style="list-style-type: none"> 0x001 Device supports variable length records. 0x008 Device can backspace over files (as in the 'mt bsf' option). 0x010 Device supports backspace record (as in 'mt bsr'). 0x020 Device requires a long time-out period for erase functions. 0x040 Device will automatically determine the tape density. 0x0200 Device knows when end of data has been reached. 0x0400 Device driver is unloadable. 0x1000 Time-outs five times longer than normal. 0x4000 Driver buffers write requests and pre-acknowledges success to application. 0x8000 Variable record size not limited to 64 KB. 0x10000 Device determines which of the two mode pages the device supports for selecting or deselecting compression. <p>So 0xd639 indicates variable record length, bsf and bsr enabled, long timeouts for erase, EOD recognition, unloadable device driver, 5 x longer timeouts, buffer writes and pre-acknowledge success, variable records not limited to 64 KB, auto-density over-ride and MODE SELECT compression.</p> <p>Similarly, 0x018659 indicates variable record length, bsf and bsr enabled, automatic density determination, EOD recognition, unloadable device driver, variable records not limited to 64 KB, and device selection of mode pages for controlling compression.</p>
<no. of densities>	4	There are four densities following in the parameter list.
<density n>	0x00	Creates a device file with compression disabled.
<density 3>	0x40 (<i>Gen 1</i>) 0x42 (<i>Gen 2</i>)	The density code for data compression enabled by default.
<default density>	3	Density 3 is the default (0x40 for Generation 1 drives, 0x42 for Generation 2 drives)
<X timeout>		All timeouts are in seconds

Values for the parameters for `name` are as follows:

target	X	X specifies the SCSI ID (target) of the device.
lun	0	Specifies the LUN for the device.

7 Verifying the Installation

Verifying the Installation of the Drive (UNIX)

As part of the installation process, you will have installed the appropriate device driver for your UNIX system, and created device files to communicate with the tape drive.

This section describes how you can verify the installation has been performed correctly.

In outline, the procedure is as follows:

1. Check the tape drive responds to a rewind command.
2. Write test data to a tape.
3. Read the test data from the tape.
4. Compare the data read from the tape with the original data on disk.

To verify the installation:

1. Test the SCSI connection to the tape drive by performing a rewind:
 - a. If there is a tape cartridge already in the drive, remove it.
 - b. Insert a tape cartridge.
 - c. Rewind the tape using the command line:

```
% mt -f <device file> rewind
```

For example, on HP-UX:

```
% mt -f /dev/rmt/0mnb rewind
```

If the command completes successfully, there will be no feedback. If it fails, you will see an error message on the console. The hardware installation may be faulty. Check the troubleshooting section of the *User's Guide* for help in identifying the problem.

2. Write a sample file to tape, using 'tar':

```
% cd /
```

```
% tar cvf <device file> <file>
```

The options to `tar` have the following meanings:

- c Create a new archive (backup file) on the device.
- v Operate in verbose mode.
- f Specify the device file explicitly.


The arguments follow the `cvf` options in the command line. Their values depend on the operating system; suggested values are given in the appropriate operating system chapter. The arguments are as follows:

<device file> The name of the device file for the drive.

Example: /dev/rmt/0m

<file> The name of the file to archive, prefixed with './'.

Example: ./stand/vmunix

 **NOTE:** Make sure you prefix the file name with `'.'` when you back it up to tape. If you do not, the restore operation in step 3 will overwrite the original copy on disk.

3. Read the file back from tape:

```
% cd /tmp
% tar xvf <device file>
```

The `'x'` option to `tar` here means “extract from the archive”.

Use the same value for the `<device file>` argument as in step 2.

4. Compare the original with this retrieved file:

```
% cmp <original file> /tmp/<retrieved file>
```

This compares the files byte by byte. If they are the same, there should be no output, and this verifies that the installation is correct. The arguments are:

`<original file>` The name of the original file, prefixed with `'/'`.
Example: `/stand/vmunix`

`<retrieved file>` The name of the file retrieved from the archive.
Example: `stand/vmunix`

Example

Suppose you are verifying the installation of an HP Ultrium tape drive on an HP-UX 11.X system. The procedure would be as follows.:

1. Change directory to root:

```
% cd /
```

2. Back up `/stand/vmunix` to tape:

```
% tar cvf /dev/rmt/0m ./stand/vmunix
```

Note the prefix of `'.'` to the filename.

3. Change to the temporary directory:

```
% cd /tmp
```

4. Extract the file from the tape:

```
% tar xvf /dev/rmt/0m
```

5. Compare the original with the restored version:

```
% cmp /stand/vmunix /tmp/stand/vmunix
```

Note that the original filename is *not* prefixed with `'.'`

Glossary

AT&T mode	Berkeley and AT&T functional modes differ in “read-only” close functionality. In AT&T mode, a device close operation will cause the tape to be repositioned just after next filemark on the tape (the start of the next file).
Berkeley mode	Berkeley and AT&T functional modes differ in “read-only” close functionality. In Berkeley mode the tape position will remain unchanged by a device close operation.
BOT	<i>Beginning Of Tape</i> . The first point on the tape that can be accessed by the drive.
buffered mode	A mode of data transfer in write operations that facilitates tape streaming. It is selected by setting the Buffered Mode Field to 1 in the SCSI MODE SELECT Parameter List header.
compression	<p>A procedure in which data is transformed by the removal of redundant information in order to reduce the number of bits required to represent the data. This is basically done by representing strings of bytes with codewords.</p> <p>In Ultrium drives, the data is compressed using the LTO-DC compression format which is based on ALDC (licensed from Stac/IBM) with two enhancements. One limits the increase in size of data that cannot be compressed that ALDC produces. The other is the use of embedded codewords.</p>
data transfer phase	<p>On a SCSI bus, devices put in requests to be able to transfer information. Once a device is granted its request, it and the target to which it wants to send information can transfer the data using one of three protocols (assuming both devices support them): asynchronous, synchronous, and wide.</p> <p>In asynchronous transfers, the target controls the flow of data. The initiator can only send data when the target has acknowledged receipt of the previous packet. All SCSI devices must support asynchronous transfer.</p> <p>In synchronous data transfer, the initiator and target work in synchronization, allowing transmission of a packet of data to start before acknowledgment of the previous transmission.</p> <p>In wide (16-bit) data transfer, two bytes are transferred at the same time instead of a single byte.</p> <p>HP Ultrium drives support asynchronous, synchronous and narrow (8-bit) wide transfers.</p>

fibre channel	<p>Fibre Channel provides an inexpensive yet expendable means of quickly transferring data between workstations, mainframes, supercomputers, desktop computers, storage devices, displays and other peripherals. Although it is called Fibre Channel, its architecture represents neither a channel nor a real network topology. It allows for an active intelligent interconnection scheme, called a fabric, to connect devices. All a Fibre Channel port has to do is to manage a simple point-to-point connection between itself and the fabric.</p> <p>Several common ULPs (Upper Level Protocols) including IP and SCSI can run on Fibre Channel, merging high-speed I/O and network functionality in a single connectivity technology.</p>
filemark	<p>A mark written by the host to the tape that can be searched for, often using the drive's fast-search capability. It does not necessarily separate files. It is up to the host to assign a meaning to the mark.</p>
immediate mode	<p>A mode of responding to SCSI commands where the drive or other peripheral does not wait until the command has finished before returning status information back to the host. For writing filemarks, Immediate mode can significantly improve the performance of systems that do not set the Immediate bit when sending a SCSI WRITE FILEMARKS command. On the other hand, data is not flushed to tape in response to a filemark command.</p>
infinite flush	<p>By default, the buffer in the drive is flushed every 5 seconds. Infinite flush avoids frequent starting and stopping of the mechanism when using a very slow application. It also avoids losing capacity through the flushing of partly written groups. On the other hand, infinite flush means that data can remain in the buffer for very long periods of time, and could be lost in the event of a power failure.</p>
LUN	<p><i>Logical Unit Number.</i> A unique number by which a device is identified on the SCSI bus. A tape drive has a fixed LUN of 0. In an autoloader, the changer mechanism is LUN1.</p>
SAN	<p><i>Storage Area Network.</i> A dedicated, high-speed network that establishes a direct connection between storage elements and servers. The hardware that connects workstations and servers to storage devices in a SAN is referred to as a fabric. The SAN fabric enables any-server-to-any-storage device connectivity through the use of Fibre Channel switching technology.</p>
sequential access	<p>Sequential access devices store data sequentially in the order in which it is received. Tape devices are the most common sequential access devices. Devices such as disk drives are <i>direct access</i> devices, where data is stored in blocks, not necessarily sequentially. Direct access allows speedy retrieval, but is significantly more costly.</p>

Index

A

AIX 17
ANSI 5
asynchronous data transfer 33
AT&T mode 33

B

Berkeley mode 33
BOT 33
buffered mode 33

C

compression 33
confirming installation 31

D

data transfer 33
device files
 AIX 21
 HP-UX 10
 IBM (AIX) 17
 Sun workstations 27
direct access 34
documents, related 5

F

fibre channel 34
filemarks 34
filenames under AIX 21

H

HP Alpha 15
HP-UX systems 9
 determining SCSI-ID 9
 device files 10

I

IBM (AIX) 17
 determining SCSI ID 17
 device files 17

immediate mode 34
infinite flush 34
installation, verifying 31

L

Linux 23
 determining SCSI ID 23
LUN 34

M

mode
 AT&T 33
 Berkeley 33
 immediate 34

P

PC-based UNIX - Linux 23

S

SCSI 5
SCSI ID, determining
 HP-UX 9
 IBM (AIX) 17
 Linux 23
 Sun workstations 27
sequential access 34
Sun workstations
 data values 29
 determining SCSI ID 27
 device files 27
synchronous data transfer 33
systems
 HP-UX 9
 Linux 23

V

verifying installation 31

W

wide data transfer 33

