



Java Desktop System

Sam Van den Abeele
Systems Engineer
Sun Microsystems



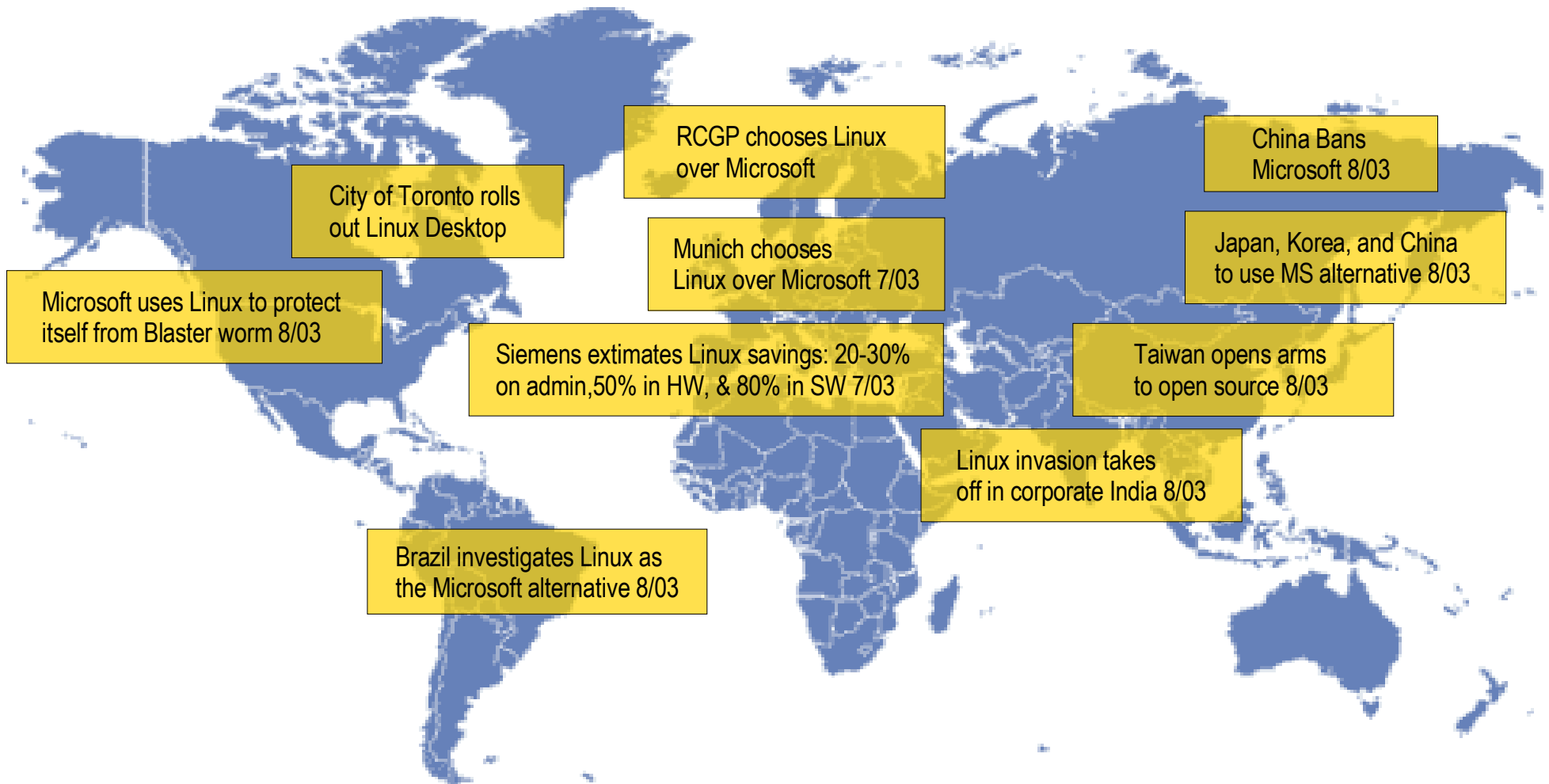
Agenda

- Business Environment
- Sun's Desktop Strategy
- Product Overview
- Business Model
- Roadmap
- Call to Action

Business Environment

Customers Are Choosing Alternatives

Recent headlines from around the world – August 2003



Sun's Desktop Strategy

Microsoft Desktop



Windows Desktop

Internet Explorer

Outlook

Microsoft Office

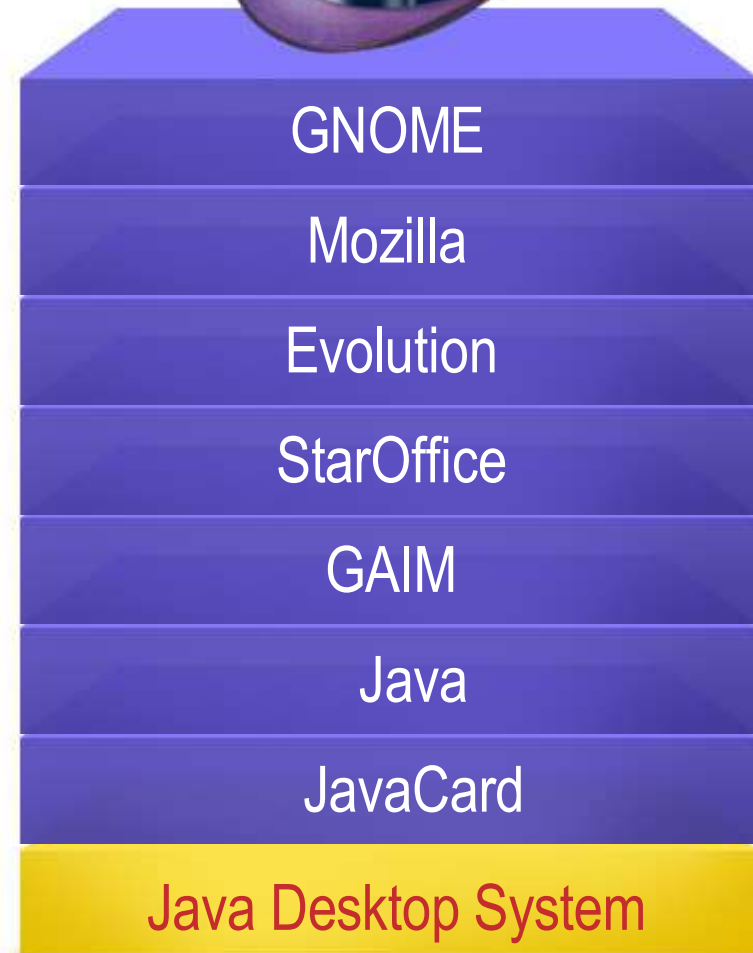
MSN Instant Messenger

.NET

DHS Warnings

MS Windows/Office

Java Desktop System



Java Desktop System



GNOME

Mozilla

Evolution

StarOffice

GAIM

Java

Java Card

Java Desktop System

The First Viable Alternative to
Microsoft in 15 Years: More
Secure, More Affordable

80% less than Microsoft
Windows & Office Upgrade

Tightly integrated and tuned desktop
environment: more stability,
manageability, usability.
Backed by Sun

Product Overview and Benefits

Desktop – GNOME 2



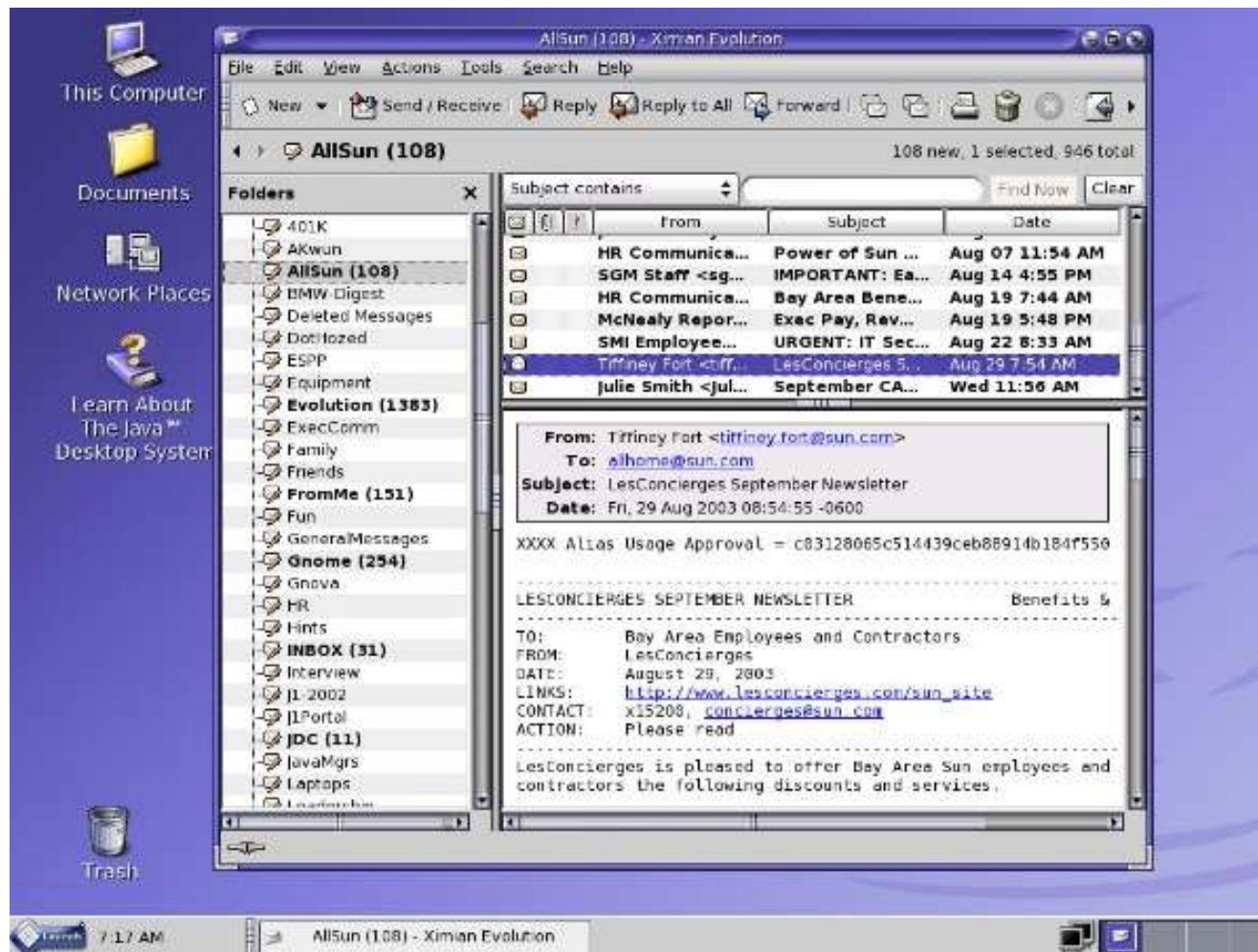
- Modern intuitive user interface
- Familiar themes, menu structures, and keyboard shortcuts
- Extensive set of software utilities
- Customizable Desktop themes, menus, icons
- Built in accessibility

Browser – Mozilla 1.4



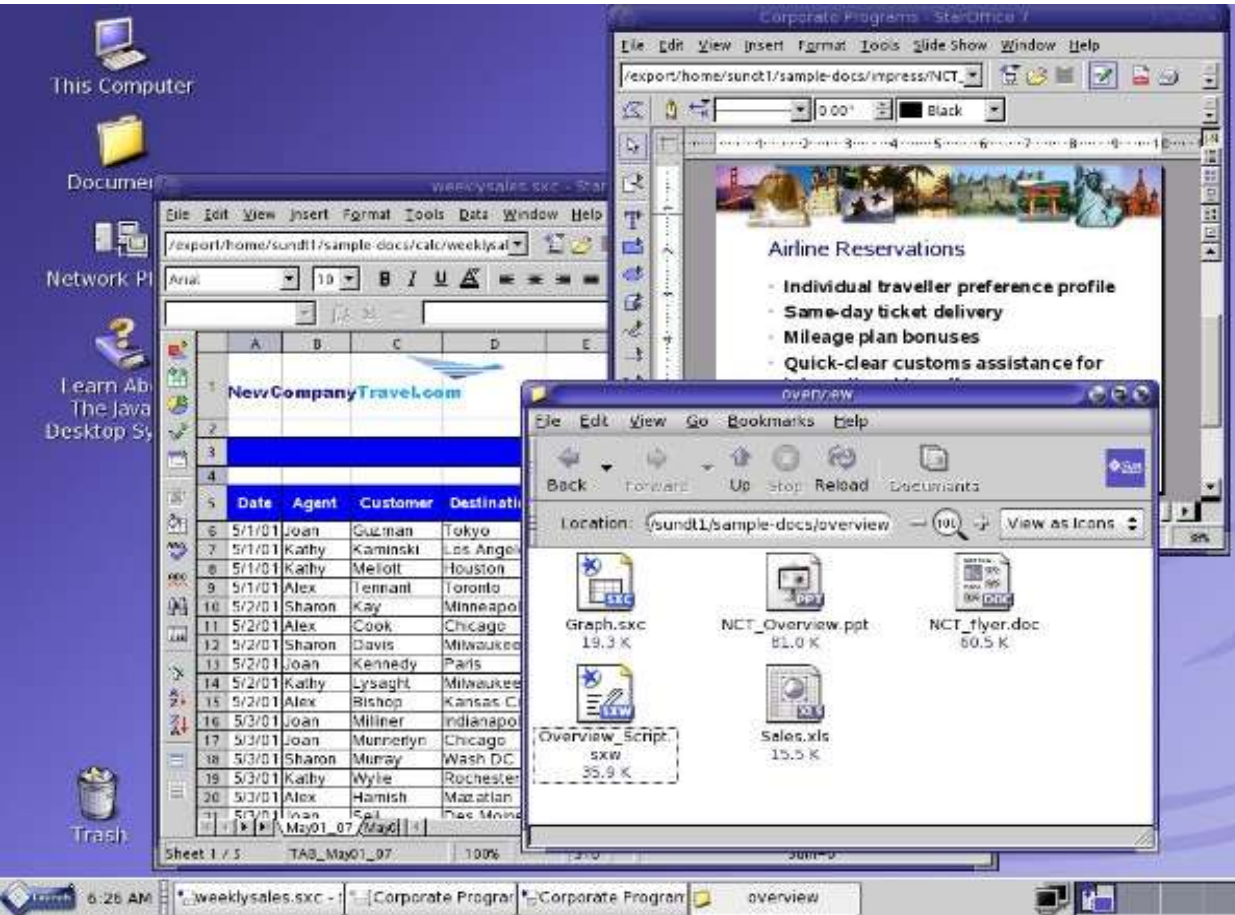
- Streamlined and efficient browsing
- Advanced search options
- Tabbed browsing and grouped bookmarks
- Enhanced performance that speeds up page loading, browsing, and mail activities
- Enhanced enterprise features including secure mail, IMAP shared folders, secure LDAP, and off-line LDAP

Mail and Calendar – Evolution

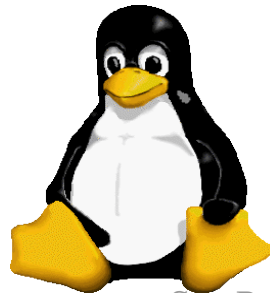


- Email with address book and LDAP support
- Full featured collaborative calendar
- Client connector to Sun ONE calendar
- Familiar UI
- Sync with Palm OS and Pocket PC devices

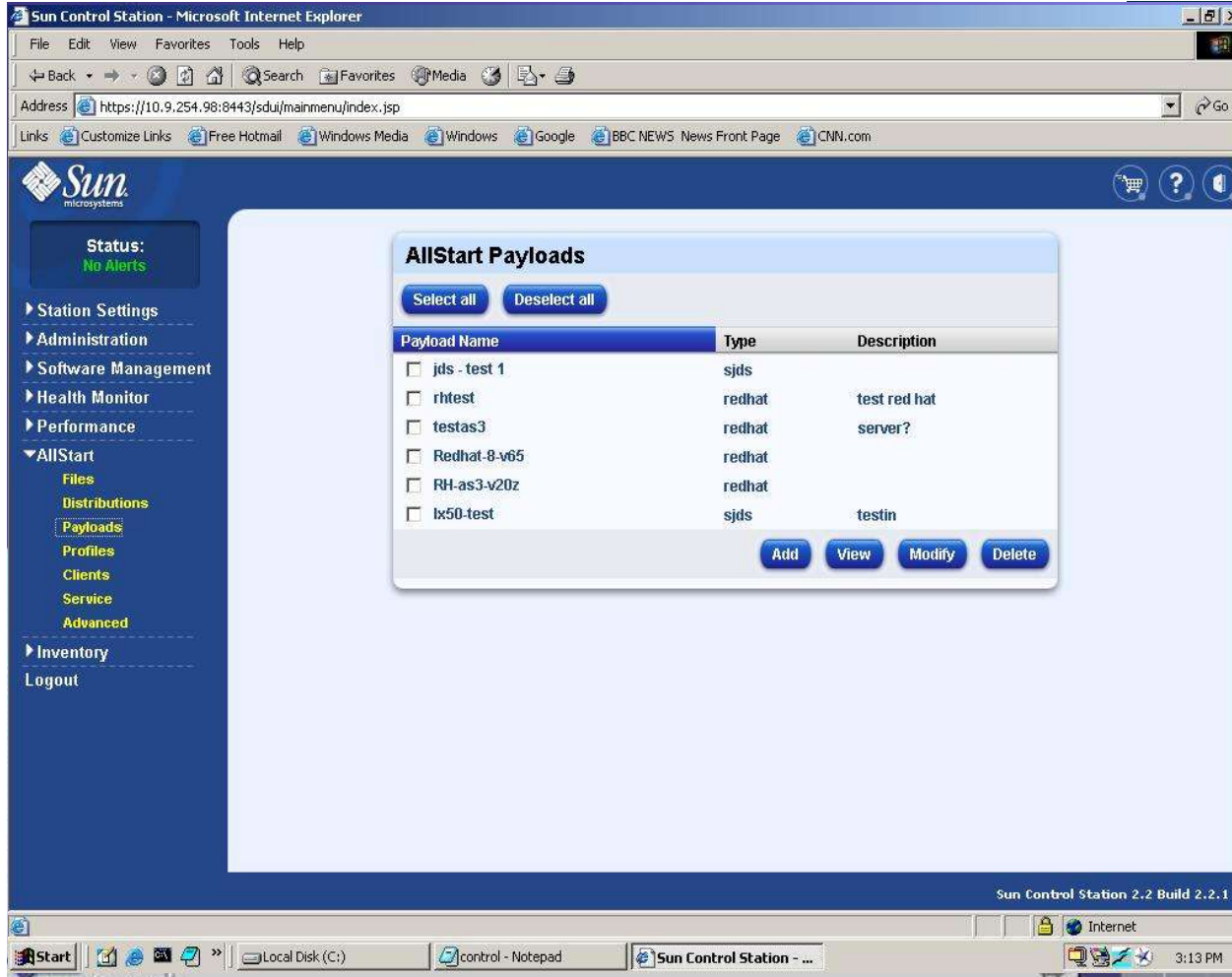
StarOffice 7



- Easy PDF export
- Support for FLASH
- Ease of Use enhancements
- PDA read/edit
- Improved MS Office compatibility
- Stability and performance
- Accessibility



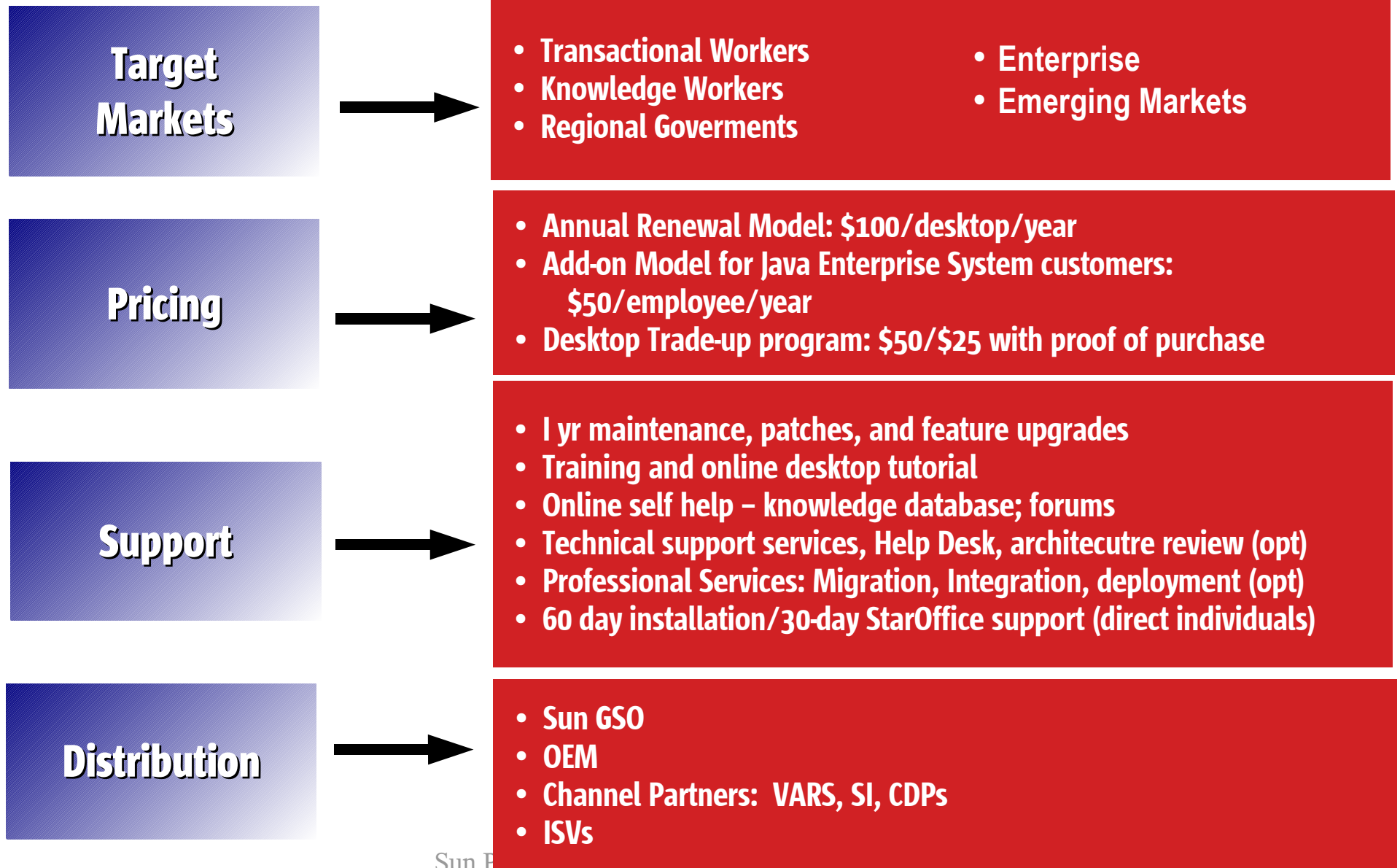
Control Station



- Jumpstart/kickstart
- Custom pkgs
- Auto deployment
- Customized clients
- Easy to use

Business Model

Business Model



Roadmap

Detailed Roadmap

2003

Release 1

- Tightly integrated and tuned desktop
- Full -featured desktop with office suite, browser, email, calendar, instant messaging, drawing, more
- Familiar desktop themes and file manager view
- Data, file and print interoperability with Windows
- Staroffice 7

1st Half 2004

Update 1

- Centrally-managed remote application deployment and installation tool
- Group policy-based user configuration with lockdown
- Automatic Update & Patch tool

Update 2

- Developer Tools
- Accessibility

Enterprise Support

Patches, migration, helpdesk, deployment, training, more

2nd Half 2004

Update 3

- Secure Authentication
- Remote Management
- Installation Server

Java Desktop System for Solaris™ OS

Java Desktop System on Sun Ray

Deployment”

*A Viable Alternative to Windows desktop
-- More Secure, More Affordable!*



1. Evaluate

- Validate that software meets your business needs
- Determine total cost of ownership and software acquisition savings

2. Pilot

- Identify integration with existing system environment
- Create migration plan

3. Deploy

- Deployment options include PC, Workstation, and Sun Ray

More Secure than Windows

Minimizing data loss, corruption and theft

- Linux/Unix strict security system prevents viruses and worms from modifying files without root access
- User authentication through the Java Card technology ensures that users get access to only their data and applications
- Single sign-on support through integration with the Sun ONE Identity Server
- Leverages Java sandbox security infrastructure that prevents viruses from infecting the system environment





sam.vandenabeele@sun.com

